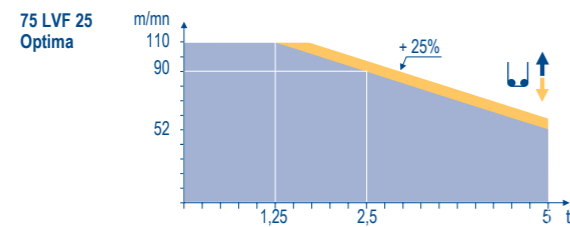


Mechanisms

MCA 3

Mechanism	Unit	0 → 44		0 → 88		0 → 22		0 → 44		hp	kW	m
		m/min	t	m/min	t	m/min	t	m/min	t			
55 RCS 25	m/min	0 → 44		0 → 88		0 → 22		0 → 44		55	40	500 m
	t	5		2,5		10		5				
75 LVF 25 Optima	m/min	3,6 → 14 → 52 → 66 → 90 → 110		1,8 → 7 → 26 → 33 → 45 → 55						75	55	895 m
	t	5 5 5 3,75 2,5 1,25		10 10 10 7,5 5 2,5								
6 D3 V4	m/min	10 - 50 (10 t) - 100 (5t)								6	4,4	
RCV 185	rpm	0 → 0,8								2 x 9	2 x 6,6	
VB 20 A	RT 544 A1 2V R ≥ 13 m	13,5 → 27								4 x 7	4 x 5,2	
CEI 38 IEC 38			kVA									
400 V (+6% -10%) 50 Hz			55 RCS : 80 kVA 75 LVF : 100 kVA									



- GB Hoisting
- Trolleying
- Slewing
- Travelling

This commercial document is not legally binding. For any technical information, please refer to the corresponding instructions.



Manitowoc Crane Group Asia Pte Ltd
 Maniwoc Crane Group
 4 Kwong Min Road
 Singapore 628707
 Tel: +65 6264 1188
 Fax: +65 6862 4040
 www.manitowoccrane.com

Americas
 Tel : +1 888 479 7278
 Tel : +1 717 593 2000

Europe - Middle East - Africa
 Tel : +33 (0) 4 72 81 50 00
 Tel : +44 (0) 191 522 2000

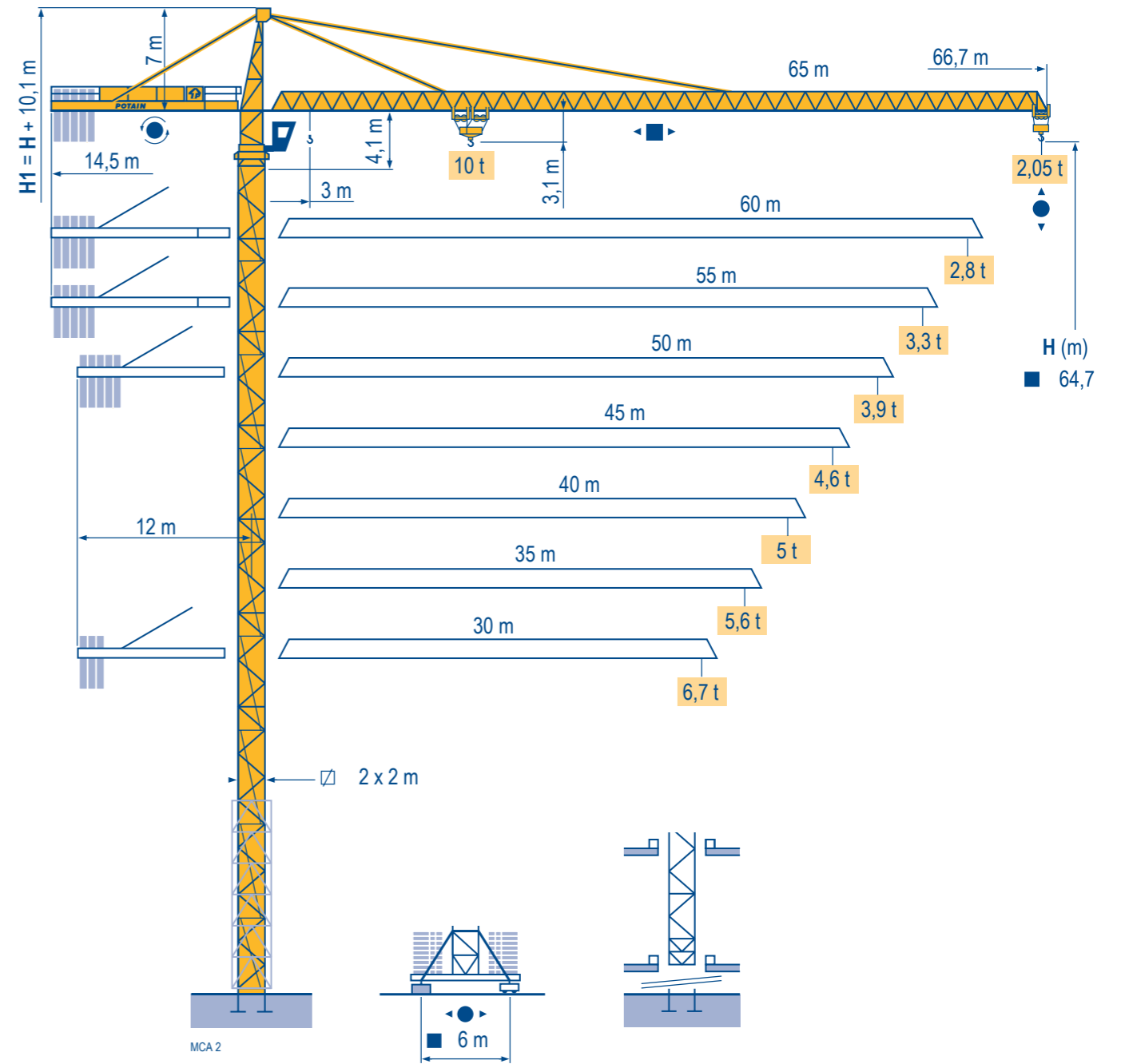
Asia - Pacific
 Tel : +65 6264 1188
 Fax : +65 6862 4040
 www.manitowoccrane.com

MC 235 B
 Réf. 2004 45 MCA 5
 Copyright.Reproduction interdite © POTAIN 2004

Réalisation Sedoc

POTAIN

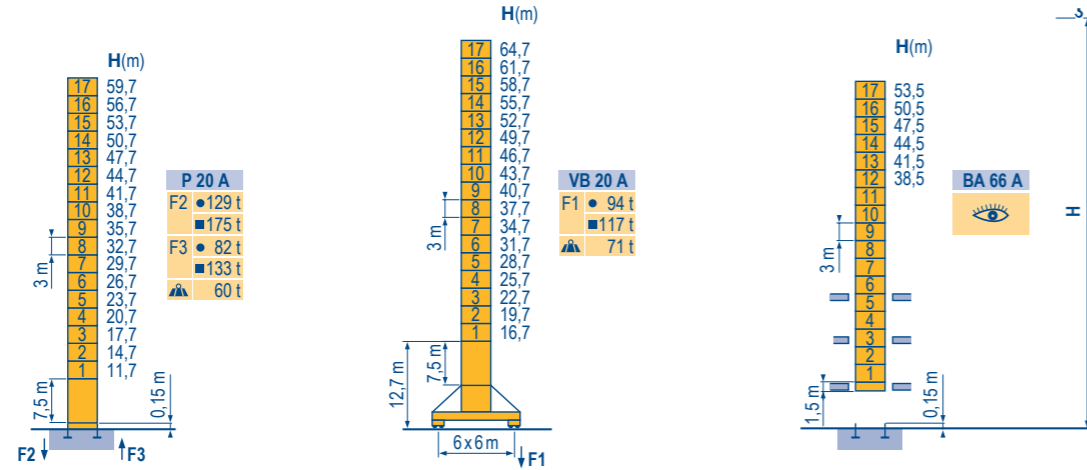
MC 235 B



Masts / Reactions

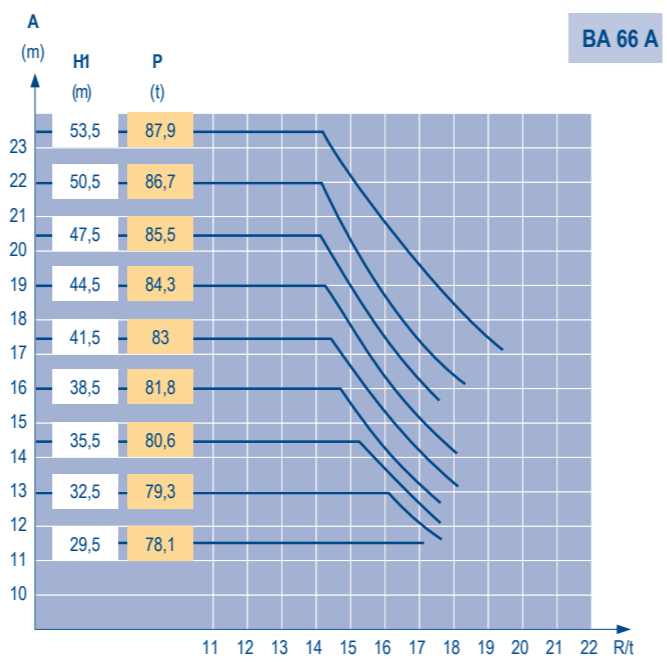
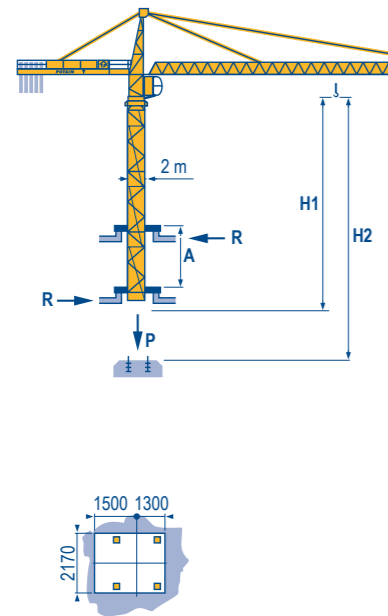
MCA 1

□ 2 m
 ▨ 30 m → 65 m



Climbing crane

MCA 1



TOPKIT MC 235 B

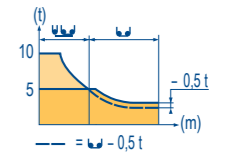
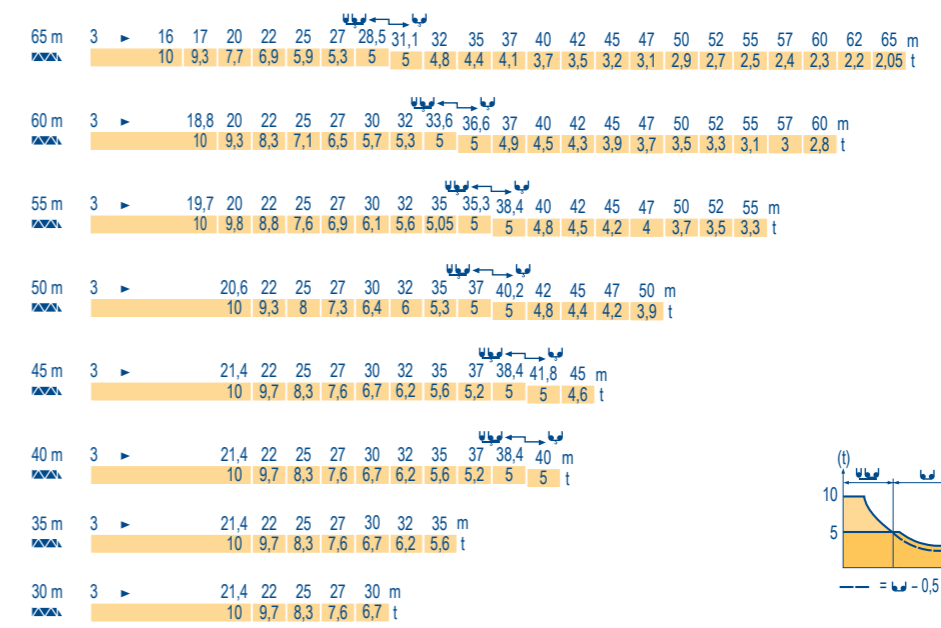


GB

- Reactions in service
- Reactions out of service
- ▲ Without load, ballast (or transport axles), with maximum jib and maximum height.
- 👁 See climbing crane

Load diagrams

MCA 1



Counter-jib ballast

MCA 1

Mast Height (m)	Jib Length (m)	4800 kg - 4200 kg 3400 kg
		(kg)
65 m	14,5 m	23 600
60 m	14,5 m	21 700
55 m	14,5 m	20 200
50 m	12 m	23 600
45 m	12 m	21 700
40 m	12 m	19 400
35 m	12 m	16 800
30 m	12 m	14 100

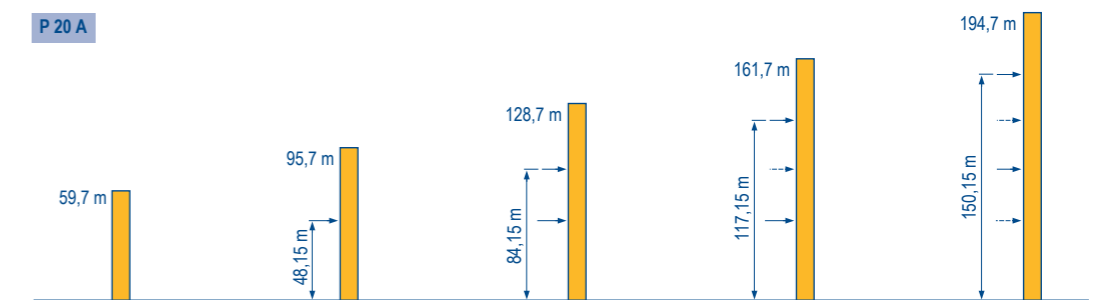
Base ballast

MCA 1

□ 2 m	VB 20 A - ● -	H (m)	64,7	61,7	58,7	55,7	52,7	49,7	46,7	43,7	40,7	37,7	34,7	31,7	28,7	25,7	22,7	19,7	16,7	13,7	
		▲ (t)	108	84	72	60	48	36	36	36	36	36	36	36	36	36	36	36	36	36	36

Anchorage

MCA 2



TOPKIT MC 235 B



GB

- A Distance between collars
- H1 Crane height
- P Crane weight (in service)
- R Horizontal reaction