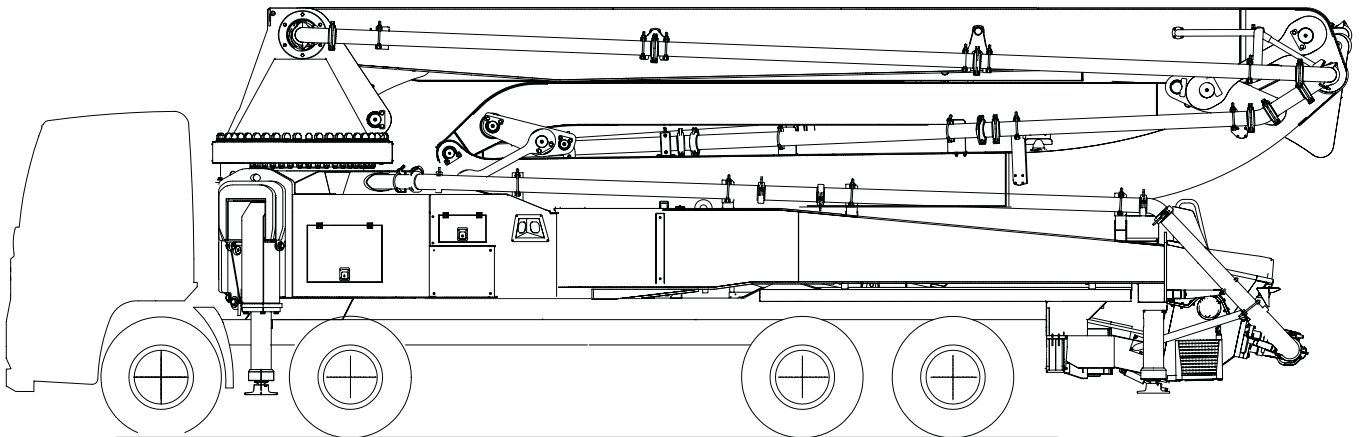


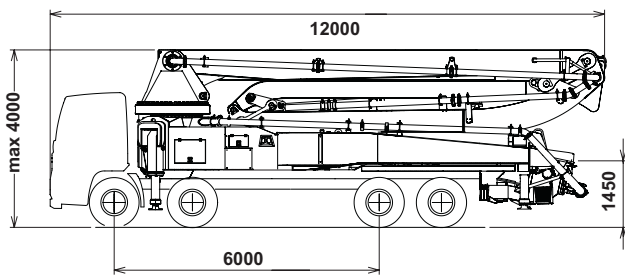
# K48 XRZ

## TRUCK-MOUNTED CONCRETE BOOM PUMP

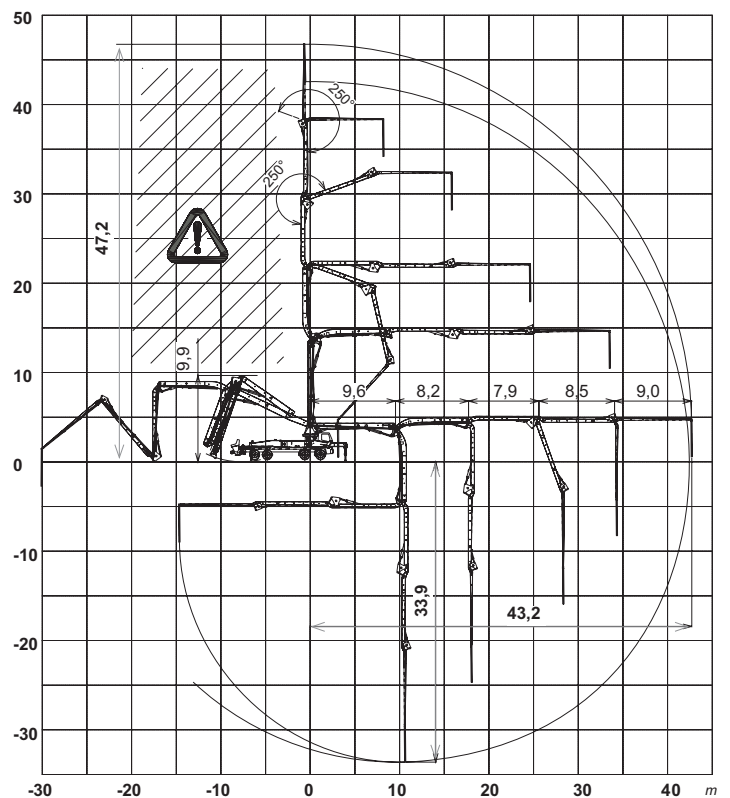
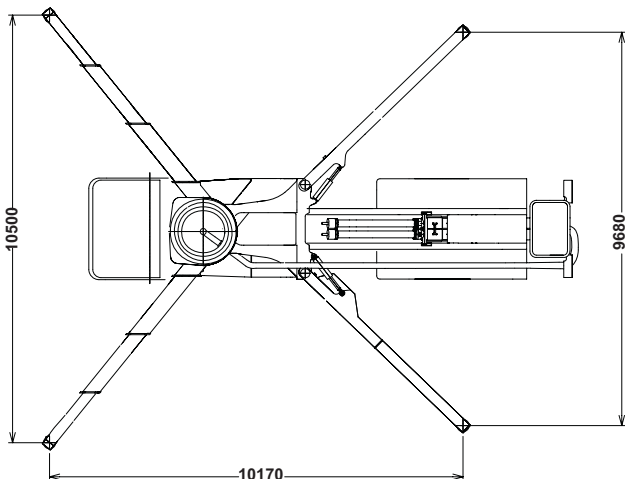
|              |                                     |
|--------------|-------------------------------------|
| Placing boom | B5RZ 48/44                          |
| Pumping unit | PA 1506/909 F8<br>HPG 1808/1113 IF9 |
| Driven by    | PTO                                 |
| Chassis      | 4 axles                             |



### Dimensions



Dimensions varying according to truck assembly



# K48 XRZ

## Main features

- Advantageous assembling on standard 4 axle chassis
- Self-supporting frame, torsion free, FEM designed
- Placing boom B5RZ 48/44, 5 sections, pipeline diameter 125 mm, "RZ" folding system
- Fully hydraulic outrigger controls on both sides of the truck
- Front "X style" diagonal outriggers with sequence controlled triple patented telescopic opening and swing-out rear outriggers for a quick and easy set-up
- "Load Sensing" proportional boom control
- The "BFC" Best-Flex Cifa supporting system allowing just one man to change delivery pipeline easily, quickly and safely
- Concrete flow rate regulator
- HPG-IF pumping unit with closed circuit and reversal flow: superb performances, high pressures and output, high reliability and easy and reduced maintenance; 9 inch S valve  
*alternatively:*  
F8 pumping system with open circuit: smooth, continuous and easy pumping, combined with high reliability
- Safety device on opening inspection hatch

## Standard equipment

- 2 Proportional radio control with two boom movement speed, synthesiser for automatic frequency search, 8 position joy stick and concrete flow rate regulator. 20 mt cable
- Emergency control pad for pumping unit HPG 1808/1113IF
- Remote controlled electric vibrator placed on the concrete hopper grid
- Centralized lubrication system for pumping unit
- Automatic oil lubrication system for pumping pistons on HPG 1808/1113IF
- Additional manual lubrication system for pumping unit
- Hard plastic outrigger support plates with relative housing
- Rear light on hopper
- Level readers for stabilization control
- Accessories for cleaning and pipes washing
- Medium pressure water pump (50l/50bar)

## Optionals

- Double thickness concrete pipes, in high resistant steel
- High pressure water pump (28l/120bar)
- Air compressor for pipeline cleaning
- Centralized lubrication system for placing boom
- Air pipeline for placing boom
- Aluminium hopper covering
- Separated emergency engine kit for independent control of the hopper mixer, concrete pumping unit, boom and water pump

## TRUCK-MOUNTED CONCRETE BOOM PUMP

|                     |                                     |
|---------------------|-------------------------------------|
| <b>Placing boom</b> | B5RZ 48/44                          |
| <b>Pumping unit</b> | PA 1506/909 F8<br>HPG 1808/1113 IF9 |
| <b>Driven by</b>    | PTO                                 |
| <b>Chassis</b>      | 4 axles                             |

## Pumping unit technical data

| Model                            |                        | PA 1506/909 F8 | HPG 1808/1113 IF9 |
|----------------------------------|------------------------|----------------|-------------------|
| Max. theoretical output          | <i>m<sup>3</sup>/h</i> | 150/90         | 179/105           |
| Max. pressure on concrete        | <i>bar</i>             | 53/95          | 76/130            |
| Max. numbers of cycles per min.  | <i>nr.</i>             | 30/17          | 36/21             |
| Conc. cylinders (diam. x stroke) | <i>mm</i>              | 230x2000       | 230x2000          |
| Concrete hopper capacity         | <i>l</i>               | 550            | 650               |
| Hydraulic circuit                |                        | open           | closed            |

## Placing boom technical data

| Model  |           | B5RZ 48/44 |
|--|-----------|------------|
| Pipeline diameter                                      | <i>mm</i> | 125        |
| Max. vertical reach                                    | <i>m</i>  | 47,2       |
| Max. horizontal distance (from center of slewing axis) | <i>m</i>  | 43,2       |
| Min. unfolding height                                  | <i>m</i>  | 9,9        |
| Section numbers  |           | 5          |
| 1st section opening angle                              |           | 90°        |
| 2nd section opening angle                              |           | 180°       |
| 3rd section opening angle                              |           | 180°       |
| 4th section opening angle                              |           | 250°       |
| 5th section opening angle                              |           | 250°       |
| Rotating angle   |           | 370°       |
| End hose length  | <i>m</i>  | 4          |

Technical data and characteristics subject to modifications without notice