

Model G6-42A TELEHANDLER



Performance

Rated Capacity

At 24 in. (610 mm) load center,
6,600 lb (2,994 kg)

Maximum Lift Height

42 ft (12.8 m)

Frame Leveling

10 degrees

Lift Speed (boom retracted)

Up: 14 sec
Down: 10 sec

Boom Speed

Extend: 20 sec
Retract: 8 sec

Travel Speed Forward

19.5 mph (31.4 kmph)

Drawbar Pull (loaded)

18,000 lb (8,165 kg)

Operating Weight with 48" carriage and forks

20,500 lb (9,299 kg)

Standard Specifications

Engine

Make and Model	John Deere 4045TF150
Fuel	No. 2 Diesel
Cycles	4
No. of Cylinders	4
Displacement	276 cu in (4.5 L)
Rated Speed	2,500 rpm
Max. Gross BHP	99 hp (74 kW)
Fuel Tank	38 gal (141 L)

Engine Filters

Two-stage dry air cleaner — centrifugal pre-cleaner with continuous dust ejector and replaceable dry filter element.
Visual service indicator.
Replaceable element-type fuel filter/water separator. Full-flow replaceable-element engine oil filter.

Electrical System

Voltage: 12V
Alternator: 63 amp
Battery: 810 cold cranking amps at 0°F

Transmission

Dana VDT-12000 powershift with torque converter. 4-speed forward and 3-speed reverse.
Neutral start switch (park brake must also be engaged to start).
Full time 4-wheel drive.
Directional and gear change control on single steering column mounted lever.

Axles

Trunnion mounted planetary 55° steer axles.
Integral steer cylinder.
High bias limited slip differential on front axle.

Service Brakes

Inboard wet disc brakes on front axle.

Parking Brakes

Wet disc spring-applied hydraulic release.
Light on dash indicates when brake is on.

Tires

Standard: 13:00 x 24 — 12PR, G2 type.

Cab

Certified ROPS/FOPS structure, adjustable seat and horn.
Forward, neutral, reverse lever on left of steering column.

Steering 4-Wheel

Power steering with manual backup.
Operator selectable 4-wheel circle, 4-wheel crab, 2-wheel front.

Instruments

Volt meter, hourmeter, engine oil pressure gauge, fuel gauge, water temperature gauge.
All gauges protected by clear acrylic cover.

Controls

Grouped for operator comfort and convenience.
Boom lift and crowd on single joystick.
Right-hand tilt and sway lever.
Foot throttle.

Hydraulic System-Implement

Single-section gear pump.
40 gal (151.4 L) system capacity.
8 micron filter with visual service indicator and suction strainer.
Lift, crowd, tilt and sway cylinders have holding valves intended to prevent dropping of load in the event of hose failure.

Auxiliary Hydraulic Circuit

Used for all attachments equipped with cylinders or other hydraulic components.
Consists of valves, controls and hydraulic lines.

Accessories & Options

Cab Enclosure

Lockable, split door. Washer and windshield wiper. Heater and defroster fan.

Light Group

2 cab-mounted headlights,
1 back-up/tail/stoptlight and rotating beacon.

Tire Options:

Foam-Filled
Rock
Solid
15.5 x 24 — 12PR

Tilt on Joystick

Cold Weather Group

Ether start and block heater.

Fenders

Air Conditioning

Attachments

Standard Carriage

48 in. (1.2 m) or 72 in. (1.8 m)

Side Tilt Carriage*

48 in. (1.2 m) or 72 in. (1.8 m)

100° Swing Carriage*

72 in. (1.8 m) Carriage

Drywall Carriage*

72 in. (1.8 m)

Pallet Forks

2.25 x 4 x 48 in. (57 mm x 102 mm x 1.2 m)
2 x 6 x 60 in. (51 mm x 152 mm x 1.5 m)

Cubing Forks

2 x 2 x 48 in. (51 mm x 51 mm x 1.2 m)

6 ft Vertical Mast*

48 in. (1.2 m) or 72 in. (1.8 m) Carriage

6 ft Swing Mast*

72 in. (1.8 m) Carriage
48 in. (1.2 m) or 72 in. (1.8 m) Forks

Bucket

0.75 cu yd (0.57 m³) — 60 in. (1.5 m)
1.25 cu yd (0.95 m³) — 74 in. (1.9 m)
1.25 cu yd (0.95 m³) — 102 in. (2.59 m)

Grapple Bucket

1.75 cu yd (1.34 m³) — 96 in. (2.4 m)

Truss Boom With* or Without Winch

10 ft (3.0 m) or 15 ft (4.6 m)

Personnel Work Platform

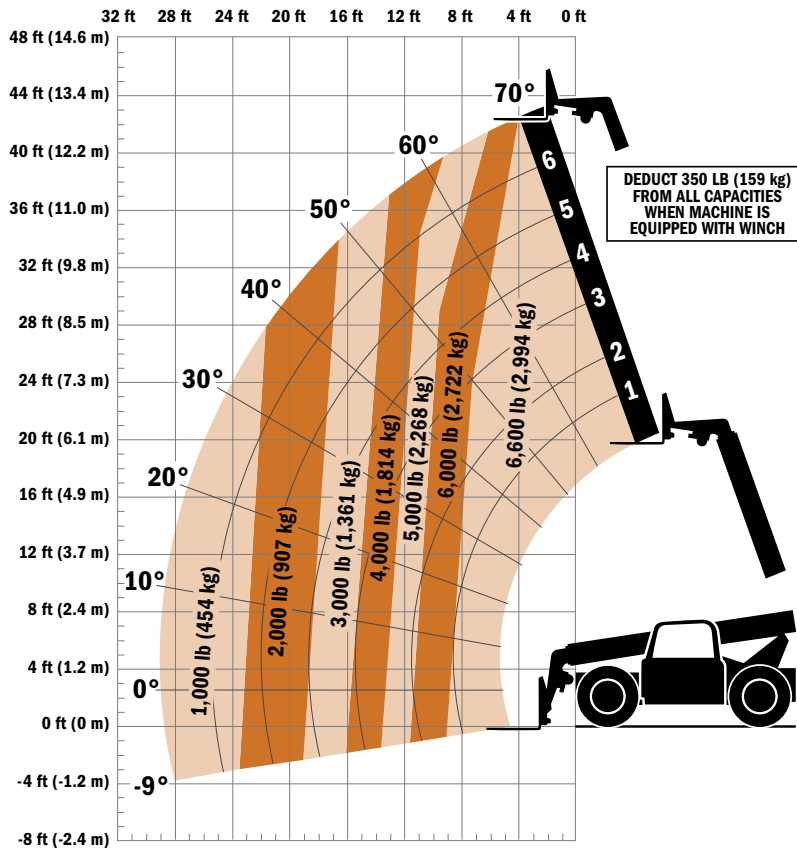
Quick Switch
Fork Mounted

Instant Hook*

Crane Hook

*Requires auxiliary hydraulics

Model G6-42A TELEHANDLER



Dimensions

Length (less forks)	212.6 in. (5.40 m)
Width	95.5 in. (2.41 m)
Height	94 in. (2.38 m)
Wheelbase	128 in. (3.25 m)
Ground Clearance	16.4 in. (416 mm)
Outside Turning Radius	144 in. (3.65 m)
Max. Reach from Front Tires to 24 in. (609 mm) Load Center	29 ft (8.83 m)

IMPORTANT

Rated lift capacities shown are with machine equipped with carriage and pallet forks. The machine must be level on a firm surface with undamaged, properly inflated tires. Machine specifications and stability are based on rated lift capacities at specific boom angles and boom lengths. (If specifications are critical, the proposed application should be discussed with your dealer.)

DO NOT exceed rated lift capacity loads, as unstable and dangerous machine conditions will result.

DO NOT tip the machine forward to determine the allowable load.

Use only JLG approved attachments with proper material handler model/attachment load capacity charts displayed in the operator's cab. OSHA requires all rough terrain forklift operators be trained according to OSHA 29 CFR 1910.178 (1).



Due to continuous product improvements, JLG Industries reserves the right to make specification and/or equipment changes without prior notification. This machine meets or exceeds ASME B56.6-2002 as originally manufactured for intended applications.

Form No.: SS-G642A-0104-15M
Part No.: 3132207
R060703
Printed in USA

JLG Industries, Inc.
1 JLG Drive
McConnellsburg, PA 17233-9533
Telephone 717-485-5161
Toll-free in US 877-JLG-LIFT
Fax 717-485-6417
www.jlg.com

An Oshkosh Truck Corporation Company