



Model
G5-19A
TELEHANDLER

Performance

- Rated Capacity**
At 24 in. (610 mm) load center,
5,000 lb (2,268 kg)
- Capacity at Maximum Lift Height**
4,000 lb (1,814 kg)
- Capacity at Maximum Forward Reach**
2,200 lb (1,000 kg)
- Maximum Lift Height**
19 ft (5.79 m)
- Reach at Maximum Height**
2 ft 7.5 in. (80 cm)
- Maximum Forward Reach**
10 ft 4 in. (3.15 m)
- Break-out Force with Standard Bucket**
7,823 lbf (34,800 N)
- Towing Capacity**
11,023 lb (5,000 kg)
- Carriage Rotation**
134 degrees
- Travel Speed**
First Gear: 6.2 mph (10 kmph)
Second Gear: 20 mph (32 kmph)
- Gradeability**
45%
- Gross Vehicle Weight**
13,889 lb (6,300 kg)

Standard Specifications

Engine	
Make and Model	Deutz 2012
Fuel	Diesel
Max. Gross BHP	100 hp (74.9 kW)
Fuel Tank	24 gal. (91 L)
Engine Oil	2.6 gal. (9.8 L)
Coolant	4 gal. (15 L)

Hydraulic System

- Gear Pump 22.2 gal./min (84 L/min)
@2200 RPM
- Hydraulic Reservoir 17 gal. (64 L)

Transmission

- Hydrostatic
- Number of Gears 2/2

Axles

- Full time planetary 4-wheel drive

Steering

- Operator selectable 4-wheel circle,
4-wheel crab, 2-wheel front

Parking Brakes

- Wet multi disc.

Tires

- Standard: 405/70-20

Cab

- Certified FOPS/ROPS structure

Accessories & Options

Enclosed Cab

- Heater
- Air Conditioning

Hydraulic Quick Switch

Special Paint

Light Group

- Cab work lights—2 front, 2 rear
- Work lights on boom
- Rotating beacon

Road Light Package

Rotating Beacon

Fenders

Hitch

- Simple, 2 bolt draw bar type

Attachments

Standard Carriage

- 48 in. (1.22 m)

Sideshift Carriage

- Includes forks

Pallet Forks

- 2 x 5 x 48 in.
(51 mm x 127 mm x 1.22 m)
- 2 x 4 x 48 in.
(51 mm x 102 mm x 1.22 m)

Bucket

- 1.05 cu yd (0.8 m³)
- 83 in. (2.1 m) wide

Light Material Bucket

- 1.96 cu yd (1.5 m³)
- 83 in. (2.1 m) wide

4-in-1 Bucket

- 0.78 cu yd (0.6 m³)
- 81 in. (2.05 m) wide

Manure Bucket

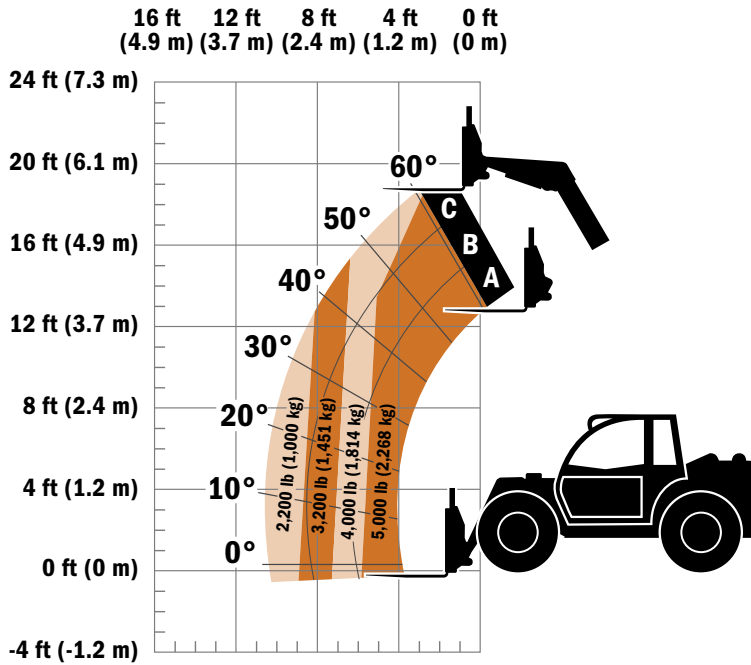
- 1.04 cu yd (0.8 m³)
- 83 in. (2.1 m) wide

Truss Boom

- 11.75 ft (3.58 m)
- 1,157 lb (525 kg) capacity

Fork Mounted Lift Hook

Model G5-19A TELEHANDLER



Dimensions

Length (less forks)	150 in. (3.81 m)
Length at Fork Holder Plate	173 in. (4.39 m)
Width	80 in. (2.03 m)
Width of Cab	35 in. (89 cm)
Track Width	64 in. (1.63 m)
Height	78.7 in. (2.0 m)
Wheelbase	106 in. (2.69 m)
Ground Clearance	12.3 in. (31.2 cm)
Turning Radius Over Tires	12 ft 10.5 in. (3.92 m)
Turning Radius at Fork	16 ft 9 in. (5.11 m)

IMPORTANT

Rated lift capacities shown are with machine equipped with carriage and pallet forks. The machine must be level on a firm surface with undamaged, properly inflated tires. Machine specifications and stability are based on rated lift capacities at specific boom angles and boom lengths. (If specifications are critical, the proposed application should be discussed with your dealer.)

DO NOT exceed rated lift capacity loads, as unstable and dangerous machine conditions will result.

DO NOT tip the machine forward to determine the allowable load.

Use only JLG approved attachments with proper material handler model/attachment load capacity charts displayed in the operator's cab.



Due to continuous product improvements, JLG Industries reserves the right to make specification and/or equipment changes without prior notification. This machine meets or exceeds ASME B56.6-2005 as originally manufactured for intended applications.

Form No.: SS-G5-19A-1205
Part No.: 3132218
R050802
Printed in USA

JLG Industries, Inc.
1 JLG Drive
McConnellsburg, PA 17233-9533
Telephone 717-485-5161
Toll-free in US 877-JLG-LIFT
Fax 717-485-6417
www.jlg.com

An Oshkosh Corporation Company